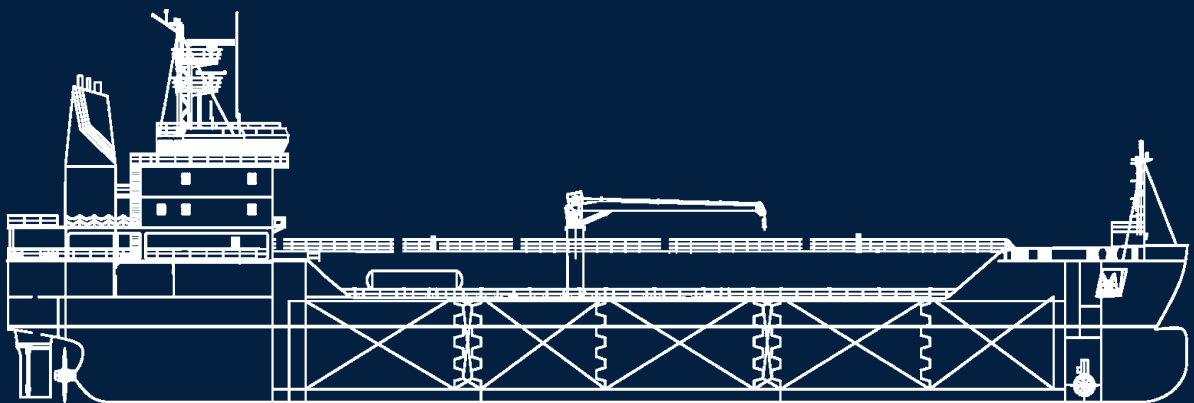




M/T COSMO

DWT 6.540 - OIL AND CHEMICAL - IMO II
MARINELINE COATING DOUBLE HULL S.B.T. - RINA CLASS



MEDITERRANEA DI NAVIGAZIONE S.P.A.

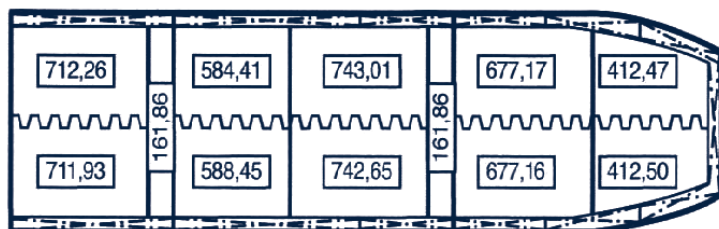
M/T COSMO



IMO	9251755
Call Sign	I.B.F.P
Type of Vessel	IMO II
Year Built/Shipyard	2003 - CELIK TEKNE SHIPYARD - TUZLA ISTAMBUL (TURKEY)
L.O.A.	m. 100,0
L.B.P.	m. 95
Breadth	m. 16,98
Moulded depth	m. 8,6
Summer Draft	m. 7,02
Summer D.W.T.	tonn 6.540
Gross Tonnage	tonn 4.412
Net Tonnage	tonn 1.821
Type of tank coating	Marineline Enhanced
Class Register	R.I.Na.
100% Cargo tanks (with slop)	m3 6.585,73
98% Cargo tanks (with slop)	m3 6.454,01
100% Slop tank capacity	m3 323,72
100% Segregate Ballast	m3 2.643,81
Max cargo specific gravity	1,54 t/ m3
Vapour return line manifold	3 x 4" midship - 1 x 4" stern
100% Bunker capacity	F.O. m3 402,89 G.O. m3 120,04
100% Fresh water capacity	m3 326,38
Tank segregations	12 (10 + 2 slop)
Service speed	14 Kts
Main Engine	1 x MAN 7L32/40 x 3360 Kw
Propeller system	1 x variable pitch
Electric propeller driving (APS)	1 x 1050 Kw (speed 11 knt)
Diesel generator	3 x 530 Kw at 1200 rpm YANMAR
Boilers	2 x 2500 Kg/h steam type
Economizer	1x 800 Kg/h exhaust gas
Bow Thruster/Stern Thruster	Bow 400 Kw
Max discharging rate	1.200 m3 /h max
Tank level / temperature system	Saab Rosemont Radar System
Cargo heating	Stainless steel coils - steam
Cargo tank cleaning system	BUTTERWORTH fixed type with 1 line fresh water and 1 line sea water
Fixed Gas Detection System	OMICRON AS
I.G.S.	1500 m³/h Inert gas SMIT
Nitrogen generator	800 m³/h
Cargo lines and valves materials	Stainless steel
Stern lines	1 x DN 250 + 1 x VRL
Cargo pumps	12 x 200 m3 /h at 120 FRAMO submerged Hydraulic Single stage Centrifugal
Cranes	1 x 7,5 ton for cargo hose @ midship - 1 x 2 ton for service @ aft
Class notation	C * oil tanker ESP; double hull; chemical tanker ESP; unrestricted navigation; V AUT-PORT; * AUT-IMS; * AUT-UMS; * AVM-APS-NS; CARGOCONTROL; MANOVR; MON-SHAFT; * STAR-HULL-NB; * STAR-MACH-PMS; * SYS-NEQ-1; VCS; GREEN STAR

MTC (t x m)	TPC (t)	DISPLACEMENT (t)	DRAFT (m)	DWT	
				SEA WATER SW (t)	FRESH WATER FW (t)
110.0	15.0	8500	6.0	6000	6000
		8000			
		7500			
100.0	14.5	7000	5.0	4000	4000
		6500			
90.0	14.0	6000	4.0	3000	3000
		5500			
80.0	13.5	5000	3.0	2000	2000
		4500			
70.0	13.0	4000	2.0	1000	1000
		3500			
		3000			
60.0	12.5	2500	1.0	0	0
		2000			
		1500			
	12.0				
	11.5				
			1.0		

All technical details are deemed to be correct but not guaranteed



SEGREGATIONS: 98% Vol

1P =	404,23	1S =	404,25
2P =	663,62	2S =	663,62
3P =	728,15	3S =	727,80
4P =	572,72	4S =	576,68
5P =	698,01	5S =	697,70
SLOP 1	158,62	SLOP 2	158,62

TOTAL= 6.454,01